



"Supporting Healthcare"

KAAHA INDUSTRIES

Manufacturer Of Dental & Surgical Instruments



Friendly Specialist

SERVICE

2018
CATALOGUE

Ophthalmic *Instruments*

KAAHA Surgical Instrument Catalog



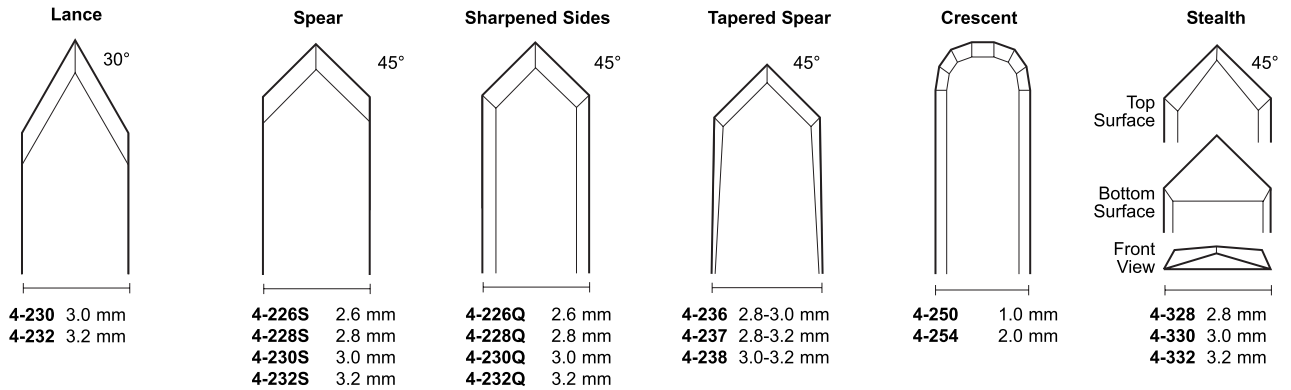
Diamond Knives	2-3
Scissors Titanium and Stainless	4-6
Forceps	
Toothed and Tying, Titanium	7-8
Toothed and Tying, Stainless	12-14
Capsulorhexis, Titanium and Stainless	9-10
Nucleus Crackers, Titanium	9
Nucleus Crackers, Stainless	11-12
Pre-chopping, Titanium	11
Lens Insertion & Folding, Titanium and Stainless	9-10
Cilia, Jewelers, Stainless	14-15
Mosquito, Bi-Polar, Chalazion, Stainless	15-16
Needle Holders , Titanium and Stainless	16-18
Fixation Rings , Titanium	19
Spatulas and Hooks , Titanium and Stainless	19-21
Retractors, Scleral Depressors, Lid Plates , Stainless	21
Lens Loops, Spuds, Currettes , Stainless	22
Lacrimal Probes, Muscle Hooks, Calipers , Stainless	23
Serrefines, Punches , Stainless	24
Lid Speculums , Titanium and Stainless	24-25
Bi-Manual I/A Handpieces and Tips	25
Vitreoretinal Scissors and Forceps	28
Foreign Body Kits	26
Iris Retractors , Titanium	27
Sterilization Trays	26
Ultrasonic Cleaning Units, Solution	27
Accessories Cleaning Blocks, Tip Covers, Coding Tape	26-27

KAAHA Surgical's Metico Diamond Knives



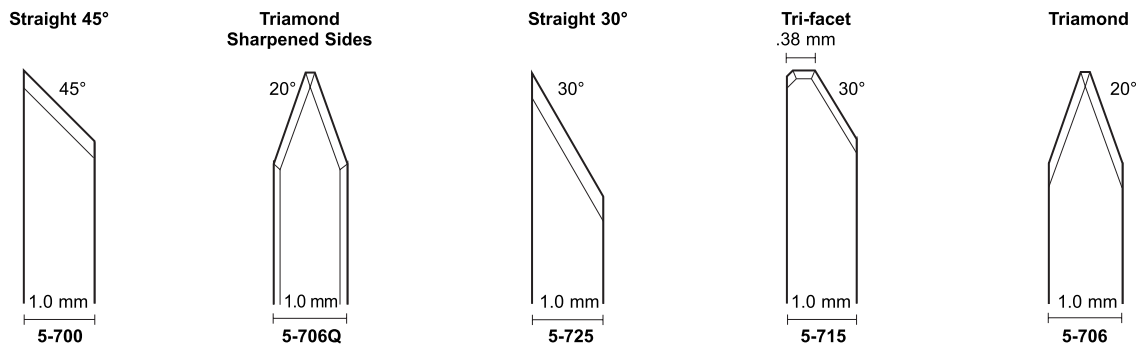
ANGLED KNIVES

- Lightweight, durable, rust-free titanium handle.
- Ideal for clear cornea and small incision techniques.
- Diamond blade mounted at an angle for a comfortable approach to any incision location.



UNIVERSAL CATARACT KNIVES

- Five Depth Settings: 0.25 mm, 0.35 mm, 0.5 mm, 0.6 mm, and fully extended.
- Universal applications for depth controlled grooves, tunnel, side port incisions, and clear cornea.
- Eliminates expense of multiple knives.
- Ideal for limbal relaxing incisions.
- Single, highly polished footplate for increased visibility and stability.
- Titanium handle for durability and long-term accuracy.



Exclusive Truncated Lance

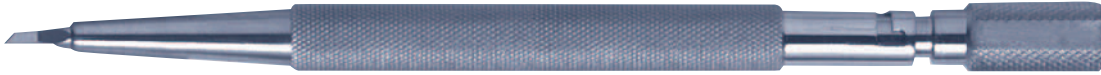


5-470 .5 mm
5-475 .6 mm

DAGIANIS PRE-SET LIMBAL RELAXING INCISION DIAMOND KNIFE

- Designed to perform limbal relaxing incisions at the slit lamp (2³/₄" extended length).
- Pre-set at either 500 or 600 microns.
- Economical aluminum handle.
- Available on 4¹/₂" length handle (5-417).

KAAHA Surgical's Metico Diamond Knives



MEDIUM KNIVES

- Lightweight, durable, rust-free titanium handle.
- Ergonomically balanced for comfort during use.
- Safety lock design prevents accidental extension of the blade.

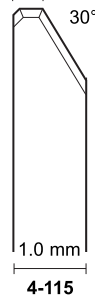
Straight 45°



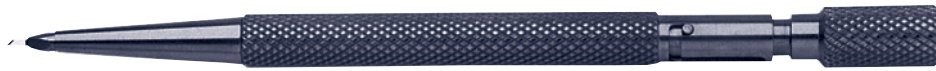
Straight 30°



**Tri-Facet
.38 mm**



1.0 mm Lance



FREEDOM KNIVES

- Lightweight aluminum handle.
- Economical.
- Less than half the price of standard diamond knives.
- Groover knife for depth-controlled incision. Available in a 0.25 mm pre-set.
- Custom depth settings available on groover knife.

**45°
Economy**



**1.0 mm Lance
Economy**



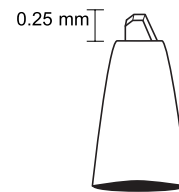
**30P
Economy**



**Tri-Facet
Economy**



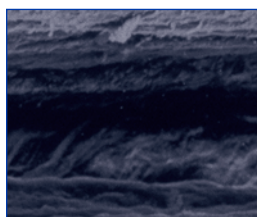
**Tri-Facet
Pre-Set Groover**



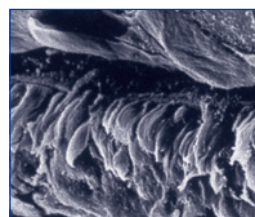
- 5-415R** Right-Handed
- 5-415L** Left-Handed
- 5-415RC** Custom Depth Setting

Spear and lance blades are available in any width, with or without sharpened sides. Custom blades available.

Tissue being cut by diamond blade.



Tissue being cut by steel blade.



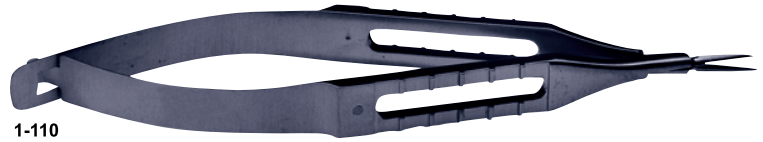
Scissors

Description/Item No. Length

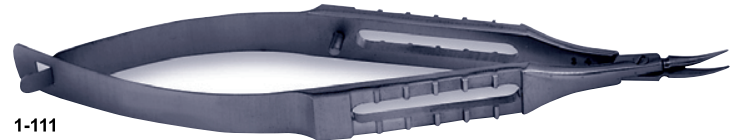
VANNAS CAPSULOTOMY SCISSORS

8mm sharp blades.

1-110	Straight	3 ⁷ / ₄₈ " length
1-111	Curved	3 ⁷ / ₄₈ " length
1-112	Angled	3 ⁷ / ₄₈ " length



1-110



1-111



1-112

WESTCOTT STRAIGHT SCISSORS

20mm blades.

1-500	Straight, sharp	4 ¹ / ₄₂ " length
1-501	Straight, blunt	4 ¹ / ₄₂ " length

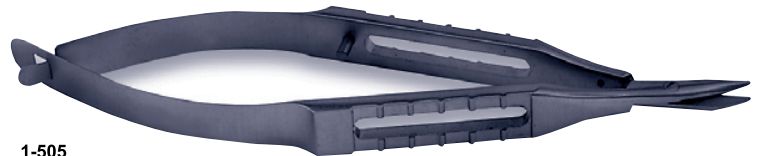


1-500

McPHERSON/WESCOTT SCISSORS

10mm blades.

1-505	Blunt	4" length
1-506	Sharp	4" length



1-505

WESTCOTT CURVED SCISSORS

20mm blades.

1-520	Blunt	4 ¹ / ₄₂ " length
1-522	Blunt, left	4 ¹ / ₄₂ " length



1-522

FOLDABLE LENS REMOVING SCISSORS AND FORCEPS

1-670	Scissors, stainless steel blades	4 ⁷ / ₄₁₆ "
2-770	Forceps	4 ¹ / ₄₂ " length



1-670



2-770

Scissors Continued

Description/Item No. Length

CASTROVIEJO CORNEAL SECTION SCISSORS

- 1-4360 Universal 4 1/2" length
- 1-4364 Standard 14mm, right 4 1/2" length
- 1-4365 Standard 14mm, left 4 1/2" length
- 1-4374 Miniature 13mm, right 4 1/2" length
- 1-4375 Miniature 13mm, left 4 1/2" length



1-4364



1-4374

WESTCOTT SCISSORS

- 1-5122 Westcott Tenotomy, curved, blunt 4 1/2" length
- 1-5450 Westcott Tenotomy, curved, right 4 1/2" length
- 1-5500 Westcott stitch, standard 4 1/2" length



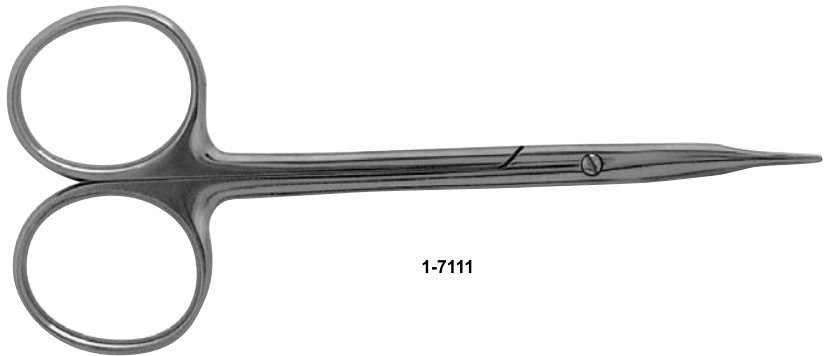
1-5450



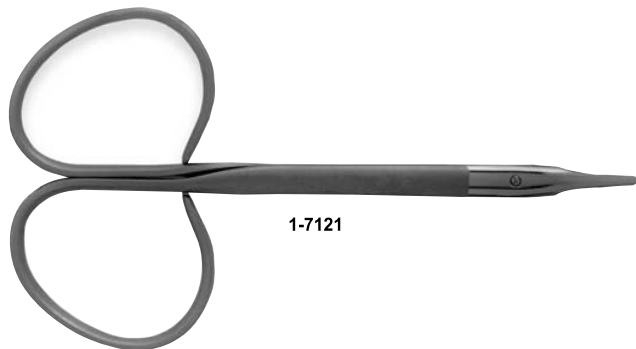
1-5500

TENOTOMY SCISSORS

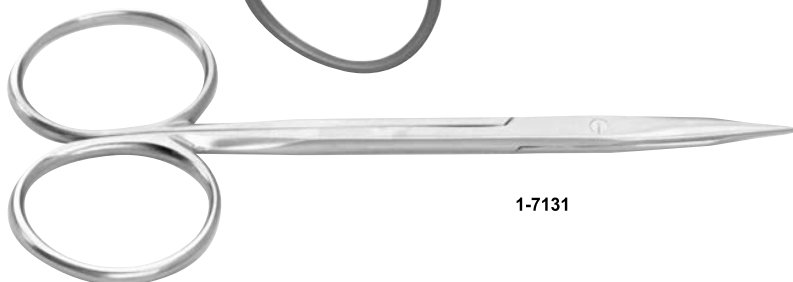
- 1-7111 Stevens Tenotomy, straight, standard 4 1/2" length
- 1-7112 Stevens Tenotomy, curved, standard 4 1/2" length
- 1-7121 Stevens Tenotomy, ribbon type, straight, blunt 4" length
- 1-7122 Stevens Tenotomy, ribbon type, curved, blunt 4" length
- 1-7131 Straight eye scissors 4 1/2" length



1-7111



1-7121



1-7131

Scissors Continued

Description/Item No. Length

VANNAS CAPSULOTOMY SCISSORS

1-8031 Straight 3¹/₄" length
 1-8032 Curved 3¹/₄" length
 1-8033 Angled 3¹/₄" length



1-8031



1-8032



1-8033

IRIS SCISSORS

1-8054 Straight, ring handle 3⁷/₈" length
 1-8055 Curved, ring handle 3⁷/₈" length

GILLS-WELSH SCISSORS

1-9011 11mm, angled blades 3¹/₄" length



1-9011

FINE STITCH SCISSORS

1-9531 13mm jaws 4¹/₄" length



1-9531

RAPID REPAIR SERVICE

The fastest turnaround time in the industry.

Our skilled craftsmen are able to repair all makes of diamond knives, stainless steel and titanium instruments. Please contact us for a kit, which includes pre-paid shipping forms and packaging materials. Call 0092 300 717 1438 for additional information.

Forceps

All forceps have laser-etched symbols corresponding to their tip configurations for easy identification. Our forceps and needle holders feature our 'TNT™', titanium-on-titanium gripping surface. This exclusive process creates a textured, but smooth surface, providing an unsurpassed grip without affecting suture or needle integrity.



PIERCE



TOOTHED



TYING



PLAIN

Description/Item No. Length

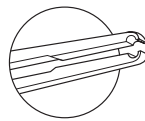
STRAIGHT PIERSE FORCEPS

With tying platforms and 'TNT™' gripping surface.

2-100 3³/₄" length
2-104 4¹/₂" length



2-100

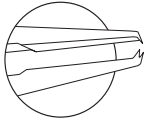


2-100
2-104

STRAIGHT TOOTHED FORCEPS

With tying platforms and 'TNT™' gripping surface.

2-110 .12mm, 1 x 2 teeth 3³/₄" length
2-114 .12mm, 1 x 2 teeth 4¹/₂" length
2-118 .3mm, 1 x 2 teeth 3³/₄" length

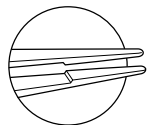


2-110
2-114
2-118

STRAIGHT TYING FORCEPS

With tying platforms and 'TNT™' gripping surface.

2-500 3³/₄" length
2-504 4¹/₂" length

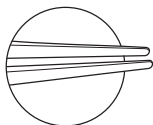


2-500
2-504

STRAIGHT PLAIN FORCEPS

Plain, no tying platforms, with 'TNT™' gripping surface.

2-900 3³/₄" length



2-900

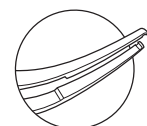
CURVED PIERSE FORCEPS

With tying platforms and 'TNT™' gripping surface.

2-101 3³/₄" length



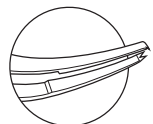
2-101



CURVED TOOTHED FORCEPS

With tying platforms and 'TNT™' gripping surface.

2-111 .12mm, 1 x 2 teeth 3³/₄" length

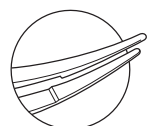


2-111

CURVED TYING FORCEPS

With tying platforms and 'TNT™' gripping surface.

2-501 3³/₄" length
2-505 4¹/₂" length



2-501
2-505

Forceps Continued

Description/Item No. **Length**

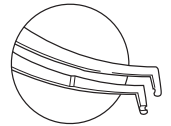
COLIBRI PIERSE FORCEPS

With tying platforms and 'TNT'[™] gripping surface.

2-130 3³/₈" length



2-130

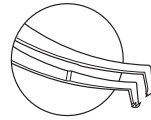


COLIBRI TOOTHED FORCEPS

With tying platforms and 'TNT'[™] gripping surface.

2-132 .12mm, 1 x 2 teeth 3³/₈" length

2-135 .12mm, 1 x 2 teeth 4¹/₂" length



2-132
2-135

ANGLED TOOTHED FORCEPS

With tying platforms and 'TNT'[™] gripping surface, 12mm, 1 x 2 teeth.

2-142 McPherson, 7mm 3³/₈" length

2-144 Kelman/McPherson, 10mm 3³/₈" length

2-157 McPherson, 7mm 4¹/₂" length



2-142

ANGLED TYING FORCEPS

With tying platforms, and 'TNT'[™] gripping surface.

2-520 Kratz, 5mm 3³/₈" length

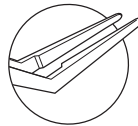
2-522 McPherson, 7mm 3³/₈" length

2-524 Kelman/McPherson, 10mm 3³/₈" length

2-526 Kelman/McPherson/ Sheets, 12mm 3³/₈" length

2-527 McPherson, 7mm 4¹/₂" length

2-529 Kelman/McPherson, 10mm 4¹/₂" length



2-520
2-522
2-524
2-526
2-527
2-529

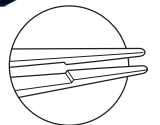
NORDAN STRAIGHT TYING FORCEPS

Round handle with smooth, flattened surface for position reference, tying platforms with 'TNT'[™] gripping surface.

2-410 4¹/₂" length



2-410



NORDAN CURVED TYING FORCEPS

Round handle with smooth, flattened surface for position reference, tying platforms with 'TNT'[™] gripping surface.

2-420 4³/₈" length



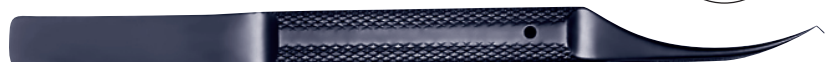
2-420



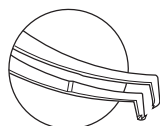
NORDAN COLIBRI FORCEPS

Round handle, 8mm diameter, smooth, flattened surface for position reference, tying platforms with 'TNT'[™] gripping surface.

2-443 .12mm, 1 x 2 teeth 4³/₈" length



2-443



Forceps Continued

Description/Item No. Length

NUCLEUS CRACKER

Cross-action, 3mm paddles with outside cross serrations.

2-820

3" length

2-820



Lens Insertion Forceps

Description/Item No. Length

ULTIMATE LENS INSERTION FORCEPS

Designed to insert rolled and standard IOLs. Pierse-type tip grasps and tucks haptic without having to switch instruments.

2-780

4 1/2" length

2-780



CROSS DIRECT FOLDABLE LENS INSERTION FORCEPS

Combines ease of direct action with control of cross-action, with lock.

2-763

5 1/4" length

2-763



DIRECT ACTION FOLDABLE LENS INSERTION FORCEPS

Fine, straight jaws with lock.

2-764

4 5/8" length

2-764



FOLDABLE LENS INSERTION FORCEPS, WIDE TIPS

Straight jaws with wide tips for added stability and control, with lock.

2-767

4 5/8" length

2-767



ROTHCHILD LENS FOLDING/INSERTION FORCEPS

Cross-action jaws for slow, controlled release of lens.

2-768

4 3/4" length

2-768



Foldable Lens Forceps

Description/Item No. Length

LENS HOLDING FORCEPS

Highly polished, rounded angled jaws.

2-766 4³/₁₆" length



2-766

UNIVERSAL LENS FOLDER

Folds all types of foldable lenses. Protective hood keeps lens from popping out.

2-4050 Stainless steel 4³/₁₆" length



2-4050

Capsulorhexis Forceps

Description/Item No. Length

BLOMBERG CAPSULORHEXIS FORCEPS

Flat handle with iris stop.

2-714 Curved jaw 3³/₁₆" length
2-715 Straight jaw 3³/₁₆" length

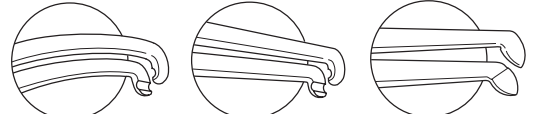


2-717

UTRATA CAPSULORHEXIS FORCEPS

Flat handle with iris stop.

2-717 Straight jaw 3³/₁₆" length



2-714

2-715

2-717

UTRATA CAPSULORHEXIS FORCEPS

Round handle with iris stop.

2-707 Straight jaw 4³/₁₆" length
2-712 Curved jaw 4³/₁₆" length



2-707

LONG CLEAR CORNEA CAPSULORHEXIS FORCEPS

Unique curvature of jaws designed to perform a controlled capsulorhexis from the clear cornea incision without stretching the wound. Cystotome teeth with iris stop. Curved jaw.

2-709 4³/₁₆" length



2-709

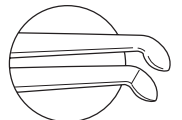
NORDAN CAPSULORHEXIS FORCEPS

Flattened surface along handle for position reference with iris stop. Straight jaw.

2-711 4³/₁₆" length



2-711



Capsulorhexis Forceps Continued

Description/Item No. Length

NEVYAS CAPSULORHEXIS FORCEPS

Cystotome teeth with iris stop.

2-713 Straight jaw 4³¹/₄₄" length



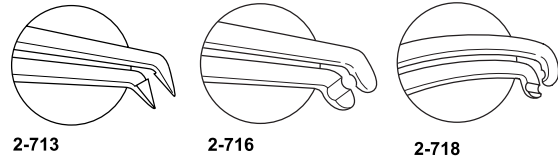
2-716

BLOOMBERG CAPSULORHEXIS FORCEPS

Pierse teeth, with iris stop.

2-716 Straight jaw 4³¹/₄₄" length

2-718 Curved jaw 4³¹/₄₄" length



2-713

2-716

2-718

TITANIUM PRECHOPPING FORCEPS

Decreases phaco time by dividing the nucleus prior to phaco. Tips penetrate the nucleus while pressure on the cross-action handles divide the nucleus. Several tip designs available for different lens densities.

2-830 Straight, normal to hard density 4¹/₂" length

2-832 Angled, normal to hard density 4¹/₂" length

2-834 Curved, normal to hard density 4¹/₂" length

2-835 Universal, angled, any density 4¹/₂" length

2-836 Angled, soft density 4¹/₂" length

2-837 Combination, angled, soft to normal density 4¹/₂" length

2-838 Curved, soft density 4¹/₂" length



2-836

Stainless Steel Forceps

Description/Item No. Length

CAPSULORHEXIS FORCEPS

2-0900 Utrata, 12mm jaws, serrated handle 4³¹/₄₆" length

2-0901 Kraff-Utrata, 12mm jaws 4³¹/₄₆" length

2-0902 Nevyas, Cystotome tips 12mm jaws 4³¹/₄₆" length

2-0905 Utrata, 20 ga, squeeze handle 4⁵/₈" length



2-0901



2-0902



2-0905

NUCLEUS CRACKER

2-0930 2.5mm paddles 3" length



2-0930

Forceps Continued

Description/Item No. Length

DODICK NUCLEUS CRACKER

2-0931 2.5mm paddles 3" length



JAFFE TYING FORCEPS

With tying platforms.

2-1511 Straight 4" length
2-1512 Curved 4" length



2-1511

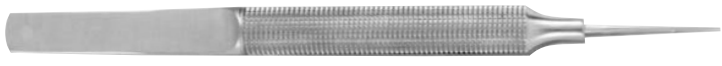


2-1512

TENNANT TYING FORCEPS

With tying platforms.

2-1521 Straight 3³/₄" length
2-1522 Curved 3³/₄" length



2-1521



2-1522

FINE TYING FORCEPS

With tying platforms.

2-1962 Curved 4³/₁₆" length



2-1962

HARMS TYING FORCEPS

With tying platforms.

2-1951 Straight 4" length
2-1952 Curved 4" length



2-1951



2-1952

MCPHERSON ANGLED TYING FORCEPS

With tying platforms.

2-1606 McPherson, 5mm angled jaw 3⁷/₈" length
2-1608 Kelman-McPherson, 8mm angled jaw 3⁷/₈" length



2-1606



MCPHERSON TYING FORCEPS

With tying platforms.

2-1671 Straight 3⁷/₈" length



2-1671

MCPHERSON TOOTHED FORCEPS

With tying platforms.

2-2612 Straight, 0.12mm, 1 x 2 teeth 3⁷/₈" length



2-2612

Forceps Continued

Description/Item No. **Length**

MCPHERSON ANGLED TOOTHED FORCEPS

With tying platforms.

- | | | |
|---------------|--|--|
| 2-2617 | 5mm angled jaw,
0.12mm, 1 x 2 teeth | 3 ⁷ / ₈ " length |
| 2-2619 | 8mm angled jaw,
0.12mm, 1 x 2 teeth | 3 ⁷ / ₈ " length |

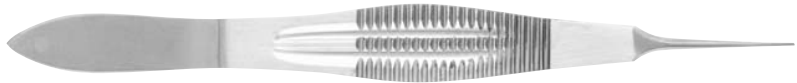


2-2617

CASTROVIEJO TYING FORCEPS

With tying platforms.

- | | | |
|---------------|----------|--|
| 2-1201 | Straight | 4 ³ / ₈ " length |
|---------------|----------|--|



2-1201

CASTROVIEJO SUTURING FORCEPS

1 x 2 teeth with tying platforms.

- | | | |
|---------------|------------------|--|
| 2-2203 | Straight, 0.3mm | 4 ³ / ₈ " length |
| 2-2205 | Straight, 0.5mm | 4 ³ / ₈ " length |
| 2-2209 | Straight, 0.9mm | 4 ³ / ₈ " length |
| 2-2212 | Straight, 0.12mm | 4 ³ / ₈ " length |



2-2203

CASTROVIEJO SUTURING FORCEPS, STRAIGHT HANDLE

1 x 2 teeth with tying platforms.

- | | | |
|---------------|------------------|--|
| 2-2222 | Straight, 0.12mm | 4 ³ / ₈ " length |
| 2-2223 | Straight, 0.3mm | 4 ³ / ₈ " length |
| 2-2225 | Straight, 0.5mm | 4 ³ / ₈ " length |



2-2222

STERN-CASTROVIEJO SUTURING FORCEPS

1 x 2 teeth with tying platforms.

- | | | |
|---------------|------------------|--|
| 2-2217 | 0.5mm, with lock | 4 ³ / ₈ " length |
|---------------|------------------|--|



2-2217

CASTROVIEJO ANGLED SUTURING FORCEPS

1 x 2 teeth with tying platforms.

- | | | |
|---------------|------------------------|--|
| 2-2232 | 7mm angled jaw, 0.12mm | 4 ³ / ₈ " length |
| 2-2233 | 7mm angled jaw, 0.3mm | 4 ³ / ₈ " length |



2-2233

BONN STRAIGHT TOOTHED FORCEPS

1 x 2 teeth with tying platforms.

- | | | |
|---------------|----------------------|--|
| 2-2012 | Short handle, 0.12mm | 2 ⁷ / ₈ " length |
| 2-2013 | Long handle, 0.12mm | 3 ³ / ₄ " length |



2-2012

TISSUE/FIXATION FORCEPS

- | | | |
|---------------|--|--|
| 2-2508 | Tissue forceps,
straight, .8mm | 3 ⁷ / ₈ " length |
| 2-2242 | Graefe fixation, 3.5mm | 4 ¹ / ₄ " length |
| 2-2249 | Manhattan Eye and Ear
Fixation, .12mm,
1 x 2 teeth | 3 ³ / ₈ " length |



A2-2013

Forceps Continued

Description/Item No. Length

LESTER FIXATION FORCEPS

- 2-2512 0.6mm, 1 x 2 teeth 3⁹/₁₆" length
 2-2513 0.6mm, 2 x 3 teeth 3⁹/₁₆" length



2-2512

BISHOP HARMON STRAIGHT TISSUE FORCEPS

- 2-2403 0.3mm, 1 x 2 teeth 4" length
 2-2405 0.5mm, 1 x 2 teeth 4" length
 2-2408 0.8mm, 1 x 2 teeth 4" length



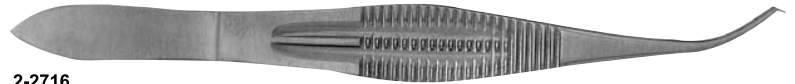
2-2403

COLIBRI FORCEPS

- 2-2712 0.12mm, 1 x 2 teeth, without tying platforms 3" length
 2-2714 0.12mm, 1 x 2 teeth, with tying platforms 3" length
 2-2716 0.12mm, 1 x 2 teeth, with tying platforms, wide handle 4³/₈" length
 2-2718 Pierse type teeth, with tying platforms 4³/₈" length



2-2712



2-2716

TROUTMAN SUPERIOR RECTUS FORCEPS

- 2-2809 10mm, angled jaws, 1 x 2 teeth 4³/₁₆" length



2-2809

BONACCOTTO UTILITY FORCEPS

- 2-3460 1.2mm 4³/₁₆" length



2-3460

DRESSING FORCEPS

Serrated.

- 2-3491 Straight, standard 4" length
 2-3492 Curved, standard 4" length
 2-3493 Straight, delicate 4" length
 2-3494 Slight curve, delicate 4" length
 2-3495 Strong curve, delicate 4" length



2-3493

CILIA FORCEPS

- 2-3614 3¹/₈" length
 2-3616 Barraquer, slightly curved with tying platforms 3³/₈" length



2-3614

Forceps Continued

Description/Item No. Length

JEWELERS FORCEPS

2-3010	#1	4 ³ / ₄ " length
2-3030	#3	4 ³ / ₄ " length
2-3030C	#3C	4 ¹ / ₂ " length
2-3040	#4	4 ³ / ₄ " length
2-3050	#5	4 ³ / ₄ " length
2-3070	#7	4 ³ / ₄ " length



2-3010



2-3030



2-3030C



2-3040



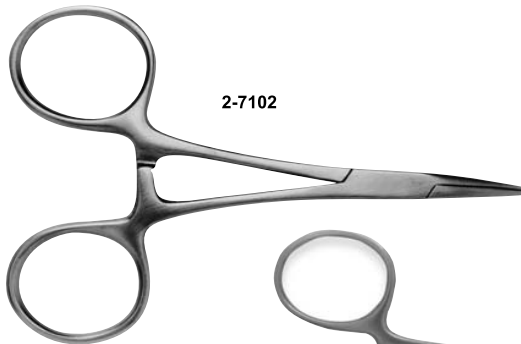
2-3050



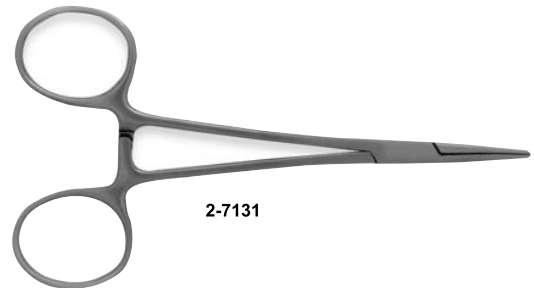
2-3070

HARTMAN MOSQUITO FORCEPS

2-7101	Straight	4" length
2-7102	Curved	4" length



2-7102



2-7131

HALSTEAD MOSQUITO FORCEPS

2-7131	Straight	5" length
2-7132	Curved	5" length

BI-POLAR FORCEPS

2-7950	McPherson bi-polar, angled	3 ⁵ / ₈ " length
2-7951	Osher Coaptation bi-polar	4 ⁵ / ₈ " length
2-7952	McPherson bi-polar, straight	3 ³ / ₄ " length
2-7960	Adson bi-polar	5" length



2-7950



2-7951

Stainless Steel Forceps

Description/Item No. Length

BISHOP HARMON

Laser textured, 1 x 2 teeth.

2-2803	.3mm, laser textured	4" length
2-2805	.5mm, laser textured	4" length
2-2808	.8mm, laser textured	4" length



2-2803

CHALAZION FORCEPS

2-7811	Baird, 8mm x 11mm	3 ⁷ / ₁₆ " length
2-7814	Francis, 14mm x 12mm	3 ⁷ / ₁₆ " length
2-7817	Wies, 12mm x 9mm	3 ⁷ / ₁₆ " length
2-7818	Heath, 12mm x 14mm	3 ³ / ₄ " length
2-7820	Desmarres, 13mm x 21mm	3 ⁷ / ₁₆ " length
2-7821	Desmarres, 13mm x 15mm	3 ³ / ₄ " length
2-7898	Lambert, 8mm x 8mm	3 ³ / ₄ " length
2-7899	Lambert, 15mm ring	3 ³ / ₄ " length



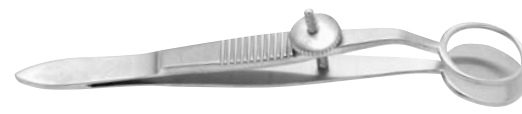
2-7811



2-7814



2-7817



2-7818



2-7820



2-7898

Titanium Needle Holders

Our forceps and needle holders feature our 'TNT™', titanium-on-titanium gripping surface. This exclusive process creates a textured, but smooth, surface providing an unsurpassed grip without affecting suture or needle integrity.

Description/Item No. Length

BLUE MAX NEEDLE HOLDERS

Hinge pin closure for greater tip stability. Fine, delicate tips.

3-300	Straight, with lock	
3-301	Straight, without lock	
33-300	Straight, with lock	5 ¹ / ₄ " length
33-301	Straight, without lock	5 ¹ / ₄ " length
3-302	Curved, with lock	5 ¹ / ₄ " length
3-303	Curved, without lock	5 ¹ / ₄ " length
33-302	Curved, with lock	5 ¹ / ₄ " length
33-303	Curved, without lock	5 ¹ / ₄ " length



3-300

Titanium Needle Holders Continued

Description/Item No. Length

NORDAN NEEDLE HOLDERS

Hinge pin closure for greater tip stability.
Fine, delicate curve.

3-420 Without lock 4³/₄" length
3-421 With lock 4³/₄" length



STRAIGHT NEEDLE HOLDERS EXTRA FINE JAWS

3-200 With lock 4¹/₄" length
3-201 Without lock 4¹/₄" length
33-200 With lock 5¹/₄" length
33-201 Without lock 5¹/₄" length



STRAIGHT NEEDLE HOLDERS STANDARD JAWS

3-220 With lock 4¹/₄" length
3-221 Without lock 4¹/₄" length
33-220 With lock 5¹/₄" length
33-221 Without lock 5¹/₄" length

CURVED NEEDLE HOLDERS EXTRA FINE JAWS

3-202 With lock 4¹/₄" length
3-203 Without lock 4¹/₄" length
33-202 With lock 5¹/₄" length
33-203 Without lock 5¹/₄" length



CURVED NEEDLE HOLDERS STANDARD JAWS

3-222 With lock 4¹/₄" length
3-223 Without lock 4¹/₄" length
33-222 With lock 5¹/₄" length
33-223 Without lock 5¹/₄" length

MICRO FINE NEEDLE HOLDERS

Our finest tips.

3-210 Straight, without lock 4¹/₄" length
3-211 Straight, with lock 4¹/₄" length
3-212 Curved, without lock 4¹/₄" length
3-213 Curved, with lock 4¹/₄" length



Stainless Steel Needle Holders

Description/Item No. Length

CASTROVIEJO STANDARD STRAIGHT NEEDLE HOLDERS

3-2010 Straight, without lock 5⁵/₈" length
3-2011 Straight, with lock 5⁵/₈" length



Needle Holders Continued

Description/Item No. Length

CASTROVIEJO STANDARD

- 3-2020 Curved, without lock 5⁵/₈" length
- 3-2021 Curved, with lock 5⁵/₈" length



3-2020

CASTROVIEJO DELICATE

- 3-2910 Straight, without lock 5⁵/₈" length
- 3-2911 Straight, with lock 5⁵/₈" length
- 3-2920 Curved, without lock 5⁵/₈" length
- 3-2921 Curved, with lock 5⁵/₈" length



3-2910



3-2920

BARRAQUER TAPERED

- 3-4810 Straight, without lock 5¹/₄" length
- 3-4811 Straight, with lock 5¹/₄" length
- 3-4820 Curved, without lock 5¹/₄" length
- 3-4821 Curved, with lock 5¹/₄" length



3-4810



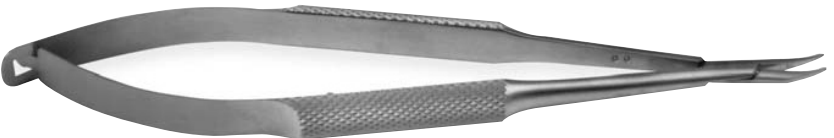
3-4821

BARRAQUER DELICATE

- 3-4910 Straight, without lock 5¹/₄" length
- 3-4911 Straight, with lock 5¹/₄" length
- 3-4920 Curved, without lock 5¹/₄" length
- 3-4921 Curved, with lock 5¹/₄" length



3-4910



3-4920

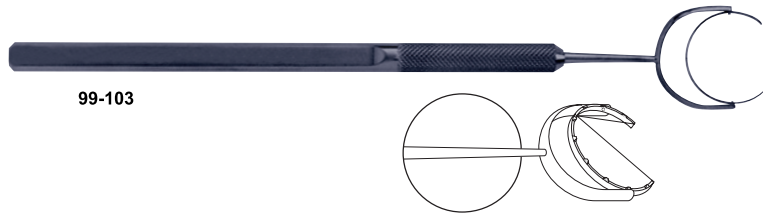
Fixation Rings

Description/Item No.

THORNTON FIXATION RINGS

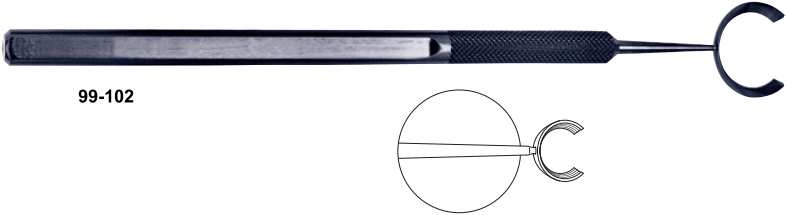
On swivel handle.

- 99-101 $3\frac{1}{4}$ " ring, 13mm inner diameter
- 99-103 $3\frac{1}{4}$ " ring, 16mm inner diameter



FIXATION RINGS

- 99-102 $3\frac{1}{4}$ " ring, concentric inner ring
- 99-104 Full circle, concentric inner ring
- 99-105 Offset swivel fixation ring
- 99-106 Full circle, 4 atraumatic teeth



Spatulas and Hooks

Description/Item No.

Length

SMOOTH LENS SPATULA

- 6-100 0.5mm wide $4\frac{3}{4}$ " length



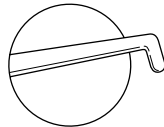
NUCLEUS SUSTAINER

- 6-102 $4\frac{3}{4}$ " length



BLOOMBERG NUCLEUS ROTATOR

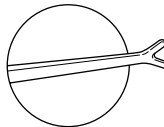
- 6-103 $4\frac{3}{4}$ " length



6-103

BECHERT NUCLEUS ROTATORS

- 6-104 Horizontal tip $4\frac{3}{4}$ " length
- 6-105 Vertical tip $4\frac{3}{4}$ " length

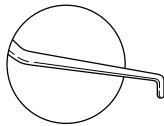


6-104

KOCH NUCLEUS CHOPPER

With 45° offset cutting wedge, rounded tip.

- 6-106 Blunt tip $4\frac{3}{4}$ " length



6-106

NUCLEUS CHOPPERS

- 6-107 Cutting wedge $4\frac{3}{4}$ " length
- 6-108 45° offset cutting wedge $4\frac{3}{4}$ " length



6-108

Spatulas and Hooks Continued

Description/Item No. Length

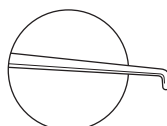
SINSKEY II HOOKS

0.2mm diameter.

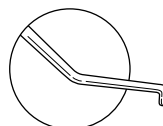
6-250	Angled, titanium	4 ³ / ₄ " length
6-2501	Straight, stainless	4 ³ / ₄ " length
	0.2mm diameter	4 ³ / ₄ " length
6-250S	Straight, titanium	4 ³ / ₄ " length
6-2502	Angled, stainless	4 ³ / ₄ " length
	0.2mm diameter	4 ³ / ₄ " length



6-250



6-250S
6-2501



6-250
6-2502

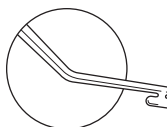
MANIPULATORS

Titanium.

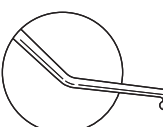
6-400	Kuglen push/pull	4 ³ / ₄ " length
6-402	Kuglen iris and lens hook	4 ³ / ₄ " length
6-450	Lester angled push/pull	4 ³ / ₄ " length
6-460	Hirschman push/pull	4 ³ / ₄ " length
6-500	Fenzl lens	4 ³ / ₄ " length



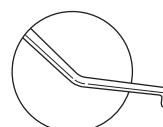
6-460



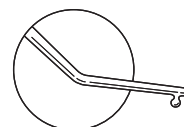
6-400



6-450



6-500



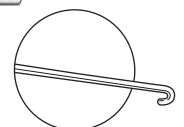
BONN IRIS HOOK

Stainless steel.

6-1382	Micro, angled	4 ³ / ₄ " length
---------------	---------------	--



6-1382



BARRAQUER IRIS SPATULAS

Stainless steel.

6-1425	0.25mm	4 ³ / ₄ " length
6-1450	0.50mm	4 ³ / ₄ " length



6-1450

CYCLODIALYSIS SPATULAS

Stainless steel. Castroviejo, double-ended.

6-2025	.25mm	5 ⁵ / ₁₆ " length
6-2050	.5mm	5 ⁵ / ₁₆ " length
6-2075	.75mm	5 ⁵ / ₁₆ " length
6-2001	1.0mm	5 ⁵ / ₁₆ " length



6-2025

PATON DOUBLE-ENDED LENS SPATULA

Stainless steel.

6-2115	Spoon, 6mm x 15mm with three grooves, spatula, 7mm angle, 2mm wide	5 ¹ / ₄ " length
---------------	--	--

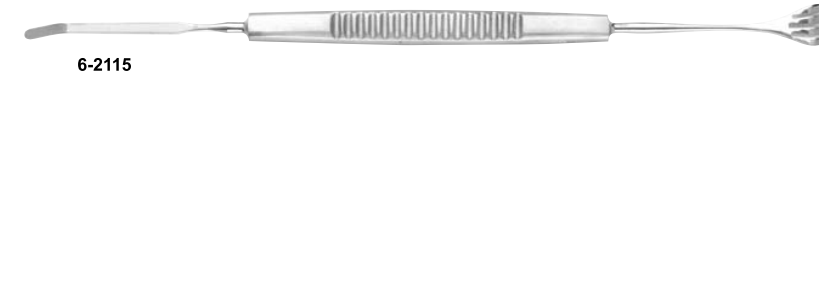


6-2115

KIMURA SPATULA

Titanium handle, platinum tip.

6-2117	Angled	6" length
---------------	--------	-----------



6-2117

Spatulas and Hooks Continued

Description/Item No. Length

BECHERT NUCLEUS ROTATOR

6-3000 Angled 4³/₈" length



AKORN NUCLEUS CHOPPERS

6-3001 Cutting wedge 4¹/₂" length
6-3002 45° offset cutting wedge 4¹/₂" length



SPHERICAL CHOPPERS

6-3008 Angled 4³/₄" length
6-3009 Straight 4³/₄" length
6-109 Angled, titanium 4³/₄" length



DRYSDALE NUCLEUS ROTATOR

6-3803 4¹/₂" length



Retractors

Description/Item No. Length

DESMARRES LID RETRACTORS

5-3400 #0, 11mm 5¹/₂" length
5-3401 #1, 13mm 5¹/₂" length
5-3402 #2, 15mm 5¹/₂" length
5-3403 #3, 17mm 5¹/₂" length

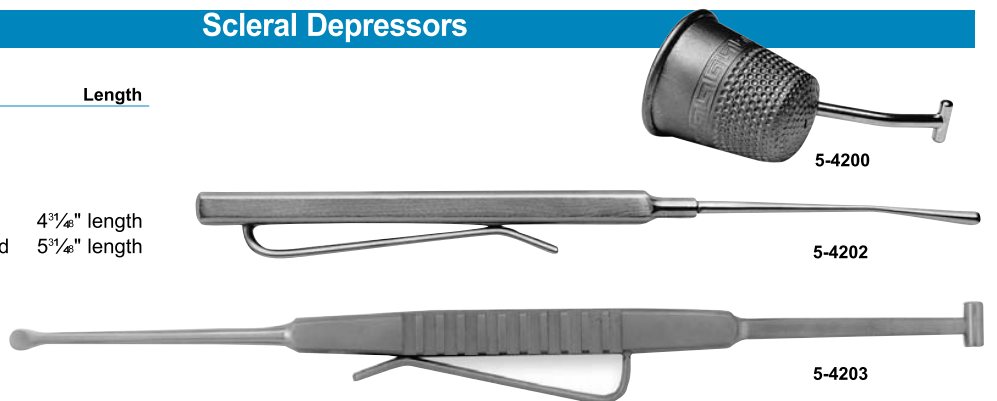


Scleral Depressors

Description/Item No. Length

SCLERAL DEPRESSORS

5-4200 Thimble-type
5-4202 Pen-type 4³/₈" length
5-4203 Schocket, double-ended 5³/₈" length



Lid Plates

Description/Item No. Length

5-4242 Jaeger lid plate 4³/₈" length
5-4243 Jaeger lid plate, laser textured 4³/₈" length



Lens Loops

Description/Item No. Length

LENS LOOPS

6-5020	Curved, 3mm wide, serrated	5 ¹ / ₄ " length
6-5711	Kirby, 5mm x 10mm	5 ¹ / ₄ " length
6-5000	Lewis, small	5 ¹ / ₄ " length
6-5022	New Orleans, 5mm x 10mm	5 ¹ / ₄ " length



Spuds/Collar Buttons

Description/Item No. Length

GOLF CLUB SPUD

6-6510	2mm blade, slightly rounded tip	4 ³ / ₄ " length
---------------	---------------------------------	--



6-6510

FOREIGN BODY SPUDS

6-6513	Davis, sharp, straight, rounded blade	4 ³ / ₄ " length
6-6515	Ellis, curved, rounded blade	4 ³ / ₄ " length
6-6517	Francis, squared-off, sharp tip	4 ³ / ₄ " length
6-6519	Lance-shape, curved tip, titanium handle, stainless tip	4 ³ / ₄ " length



6-6513



6-6515



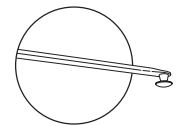
6-6519

GRAETHER COLLAR BUTTONS

6-9641	Micro, straight	4 ⁵ / ₈ " length
6-9642	Micro, angled	4 ⁵ / ₈ " length



6-9641



Curettes

Description/Item No. Length

MEYERHOEFER CHALAZION CURETTES

6-7000	#0, 1.5mm	5 ¹ / ₄ " length
6-7001	#1, 1.7mm	5 ¹ / ₄ " length
6-7002	#2, 2.2mm	5 ¹ / ₄ " length
6-7003	#3, 2.5mm	5 ¹ / ₄ " length
6-7004	#4, 3.0mm	5 ¹ / ₄ " length



6-7001

Lacrimal Probes/Dilators

Description/Item No. Length

BOWMAN LACRIMAL PROBES

Sterling silver, plain.

6-8000	#0000/000	5 ¹¹ / ₁₆ " length
6-8010	#00/0	5 ¹¹ / ₁₆ " length
6-8012	#1/2	5 ¹¹ / ₁₆ " length
6-8034	#3/4	5 ¹¹ / ₁₆ " length
6-8056	#5/6	5 ¹¹ / ₁₆ " length
6-8078	#7/8	5 ¹¹ / ₁₆ " length



6-8010

CASTROVIEJO LACRIMAL DILATOR

6-8130 Double-ended 5⁹/₁₆" length



6-8130

WILDER LACRIMAL DILATOR

6-8131	#1, fine taper	4 ¹¹ / ₁₆ " length
6-8132	#2, medium taper	4 ¹¹ / ₁₆ " length
6-8133	#3, heavy taper	4 ¹¹ / ₁₆ " length



6-8131

INFANT LACRIMAL DILATOR

6-8135 .5mm tip 3¹¹/₁₆" length



6-8135

Muscle Hooks

Description/Item No. Length

6-9100	Jameson, small, 8mm	5 ³ / ₁₆ " length
6-9102	Jameson, large, 10mm	5 ³ / ₁₆ " length
6-9105	Kirby hook and loop, double-ended	5 ³ / ₁₆ " length
6-9107	Green muscle hook, small	5" length
6-9108	Stevens Tenotomy hook, small	4 ³ / ₁₆ " length
6-9112	Von Grafe Tenotomy hook, #2	5 ¹ / ₄ " length
6-9115	Kennerdell Tenotomy hook, small	5" length



6-9102

Calipers

Description/Item No. Length

7-2160	Castroviejo	3 ³ / ₁₆ " length
7-2165	Jameson	4" length



7-2160

Serrefines/Punches

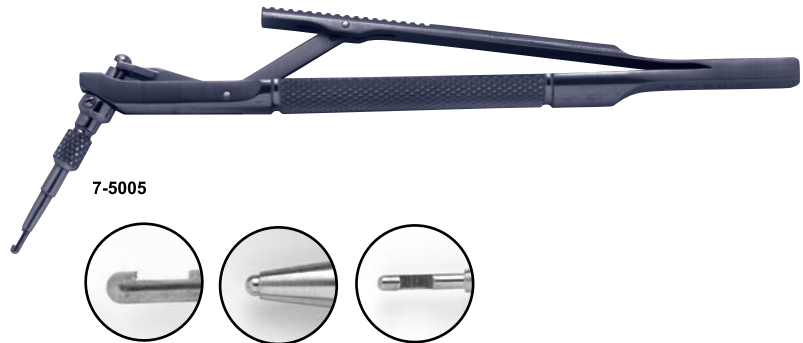
Description/Item No. Length

DIEFFENBACH SERREFINES

7-3401	Straight, small	1 ¹ / ₄ " length
7-3402	Curved, small	1 ¹ / ₄ " length
7-3406	Straight, large	2 ¹ / ₄ " length
7-3407	Curved, large	2 ¹ / ₄ " length

PUNCHES

7-5001	Kelley Decemet membrane punch	
7-5003	Luntz-Dodick trabeculectomy punch	
7-5005	Trabeculectomy punch with replaceable tips. Titanium body, stainless tips	



7-5005

Titanium Lid Speculums

Description/Item No. Length

WIRE LID SPECULUM, TEMPORAL

For precise opening and control of lids.

99-120	Adult	3 ³ / ₈ " length
99-124	Infant	2 ¹ / ₄ " length



99-120

WIRE LID SPECULUM, NASAL

99-122	Adult	2 ³ / ₄ " length
99-126	Infant	2 ¹ / ₄ " length



99-123

SOLID LID SPECULUM, TEMPORAL

99-123	Adult	3 ³ / ₈ " length
99-127	Infant	2 ¹ / ₂ " length



99-130

SOLID LID SPECULUM, NASAL

99-125	Adult	2 ³ / ₄ " length
99-129	Infant	2 ¹ / ₂ " length



99-131

ROTHCHILD LASIK LID SPECULUM

Feature curved wire ends for patient comfort.

99-130	Temporal	3 ³ / ₈ " length
--------	----------	--

ASPIRATING LID SPECULUM

99-131	Temporal	3 ³ / ₈ " length
99-132	Nasal	3 ³ / ₈ " length



99-134

REPLACEABLE LID SPECULUM SET

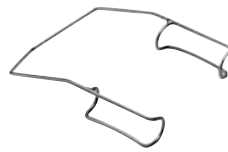
99-134		3 ¹ / ₄ " length
--------	--	--

Lid Speculums Continued

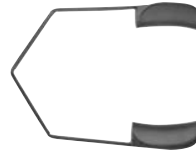
Description/Item No. Length

BARRAQUER WIRE LID SPECULUM

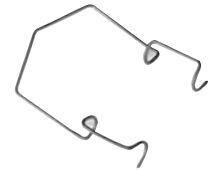
5-2000	Adult, 14mm	1 ¹ / ₂ " length
5-2010	Pediatric, 10mm	1 ³ / ₈ " length



5-2000



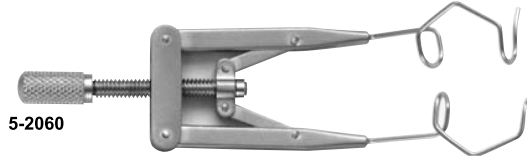
5-2011



5-2017

BARRAQUER SOLID LID SPECULUM

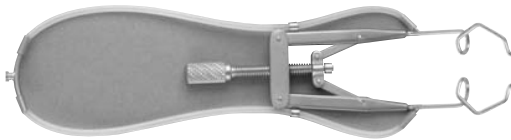
5-2011	Pediatric, 11mm	1 ³ / ₈ " length
5-2015	Adult, 15mm	1 ¹ / ₂ " length



5-2060

KRATZ-BARRAQUER WIRE LID SPECULUM

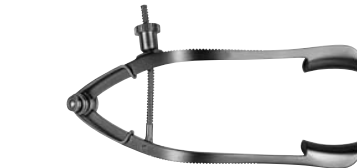
5-2017	Adult, 15mm	1 ¹ / ₂ " length
5-2018	Pediatric, 11mm	1 ³ / ₈ " length



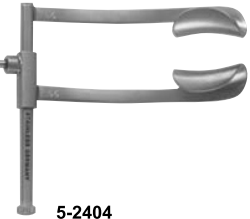
5-2065

ADJUSTABLE LID SPECULUMS

5-2060	Lieberman, temporal, V-blade	3 ³ / ₈ " length
5-2065	Lieberman, V-blade aspirating	3 ³ / ₈ " length
5-2403	Lancaster, solid, 15mm blades	2 ³ / ₄ " length
5-2404	Cook, adult	2 ³ / ₄ " length
5-2401	Cook, infant	2" length



5-2403



5-2404

Bloomberg Bi-Manual Irrigating/Aspirating Handpieces

Description/Item No.

BI-MANUAL ASPIRATING HANDPIECES AND TIPS

0-500	Curved, 21 ga, 0.3mm port
0-501	Aspirating handpiece only
0-502	Curved, 23 ga, 0.3mm port
0-503	Curved, 23 ga, 0.5mm port



0-500

CURVED ASPIRATING TIPS ONLY

0-510	21 ga, 0.3mm port
0-511	21 ga, 0.4mm port
0-512	21 ga, 0.3mm port, sand blasted
0-514	23 ga, 0.3mm port
0-516	23 ga, 0.3mm port, sand blasted
0-518	23 ga, 0.5mm port, sand blasted



0-505

BI-MANUAL IRRIGATING HANDPIECES

0-504	Irrigating handpiece only
0-505	Curved, 21 ga, 0.4mm dual ports
0-506	Curved, 21 ga, 0.5mm dual ports
0-507	Curved, 23 ga, 0.4mm dual ports
0-508	Curved, 23 ga, 0.5mm dual ports

CURVED IRRIGATING TIPS ONLY

0-520	21 ga, 0.4mm dual ports
0-522	21 ga, 0.4mm dual ports, sand blasted
0-524	23 ga, 0.4mm dual ports
0-526	23 ga, 0.4mm dual ports, sand blasted
0-527	23 ga, 0.5mm dual ports, sand blasted
0-528	21 ga, 0.5mm dual ports
0-529	21 ga, 0.5mm dual ports, sand blasted

BLOOMBERG BI-MANUAL HANDPIECES

- Aspiration tip can be maneuvered in any direction allowing cortical clean up in difficult to reach places.
- Separate handpieces allow irrigation stream to always be directed horizontally away from the endothelium.
- Exclusive, replaceable tips.
- Available with sandblasted tips for capsule polishing.
- Titanium handles, stainless steel tips.

Foreign Body Removal Kits

Item No./Description

9260 ADVANCED FOREIGN BODY REMOVAL KIT

Contains everything needed for foreign body removal:

- Golf club spud
- Cilia forceps
- AlgerBrush II
- Castroviejo lachrymal dilator
- Barraquer lid speculum
- Lachrymal cannula, 23 ga, straight
- Desmarres lid retractor
- Sterilization tray, 6³/₄" x 4¹/₄"



9205 DELUXE FOREIGN BODY REMOVAL KIT

Contains:

- Golf club spud
- Cilia forceps
- AlgerBrush II
- Castroviejo lachrymal dilator
- Liquid sterilization/soaking tray

9200 FOREIGN BODY REMOVAL KIT

Contains:

- Golf club spud
- Cilia forceps
- Castroviejo lachrymal dilator
- Liquid sterilization/soaking tray

Call for special pricing on these conveniently packaged kits. Custom Kits Available!

Rust Ring Removers

Description/Item No.

Length



ALGERBRUSH II

7-1922 Rust ring remover, 0.5mm burr 4³/₈" length

CHUCK & BURR ASSEMBLY

Algerbrush II replacement.

7-1929 1.0mm burr

7-1930 0.5mm burr

ALGERBRUSH II BURRS

7-1931 1.0mm

7-1935 0.5mm

7-1937 3.5mm Diamond Burr

DISPOSABLE BURRS

Fits Algerbrush II, packaged sterile, 10 per box.

7-1941 1.0mm

7-1945 0.5mm

Sterilization Trays/Cleaners

Description/Item No.

7-100 DIAMOND KNIFE CLEANING BLOCK

Used after each surgical case will prevent a "protein build-up," or film from forming on the diamond blade. Packaged in a sterile peel-pak. 10 per box.



7-235

STERILIZATION TRAYS

Made of durable Ultem™. Withstands repeated sterilizations. Mat is made of soft silicone.



7-200 Single Diamond Knife tray

7-202 Two-knife tray

7-203 Three-knife tray

7-225 Small instrument tray, 6¹/₂" x 4"

7-230 Medium instrument tray, 10" x 6"

7-235 Large instrument tray, 15" x 10"

7-240 Double-layer instrument tray, 10" x 6"



7-9209 DISINFECTANT/STERILIZATION TRAY

Accepts both glutaraldehyde and phenol based disinfectants. Inner tray with built-in handle automatically rises when the cover is opened, which allows the solution to drain. Date dial on lid reminds you when the solution should be changed.

Tip Covers

Item No./Description

Protective tip covers for surgical instruments. Autoclavable.

7-9219 30/pack, 10 of each size

Small: 3mm diameter x 21mm long

Medium: 4.5mm diameter x 21mm long

Large: 6.5mm diameter x 28mm long



Surgical Instrument Coding Tape

Item No./Description

Available in a wide variety of colors for easy identification of surgical instruments. Able to withstand repeated autoclaving. 1/4" width, 250" per roll.



7-0201	White	Each
7-0202	Blue	Each
7-0203	Green	Each
7-0204	Red	Each
7-0205	Yellow	Each

Ultrasonic Cleaning Solution

Item No./Description

ULTRASONIC CLEANERS

For exceptional cleaning of delicate ophthalmic instruments. Hi-reliable LZT Transducers, 45kHz. Modular, solid state generators. Automatic tuning to workload and solution level. Includes cover and built-in timer. Drain on all models except A7-4060.

7-4060	5" x 5" x 3" tank	Each
7-4062	9" x 5" x 4" tank	Each
7-4064	11 1/2" x 5 1/2" x 6" tank	Each
7-4066	11" x 9" x 6" tank	Each
7-4068	12 1/2" x 11" x 6" tank	Each

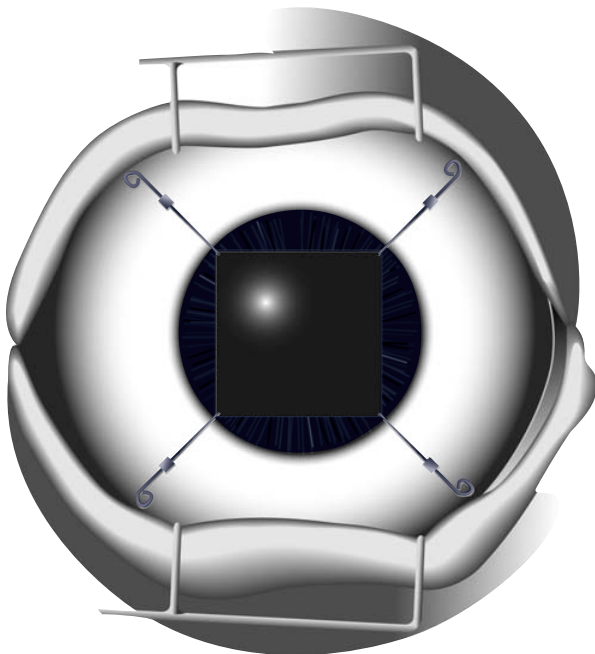
ULTRASONIC CLEANING SOLUTION

Safely cleans all diamond knives, stainless steel, titanium, and aluminum surgical instruments. Will not breakdown epoxy in diamond knives. Cleans and lubricates. Non-Ionic, bio-degradable, environmentally safe.

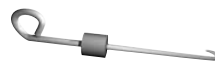
7-9214	Pelion ultrasonic cleaning solution, quart	Each
--------	--	------

Reusable Titanium Iris Retractors

Exclusively from Pelion



0-727
Hook and Loop
on same plane



0-728
Loop in vertical plane
Hook in horizontal plane
to the left



0-729
Loop in vertical plane
Hook in horizontal plane
to the right

- Hook and Loop design allows gentle insertion, and retraction with more control, and less trauma.
- Easier to remove than disposable models.
- Releases iris without sphincter rupture.
- No anterior vaulting of retracted iris so incision is not blocked.
- Microscopically engineered tapered hook is carefully crafted for iris and capsule safety.
- Securing lug holds hook in place on sclera without exerting pressure on the cornea.
- Re-usable titanium offers significant cost savings.
- Set includes four titanium hooks.
- Single replacement hooks available.

IRIS RETRACTORS ARE ENLARGED TO SHOW SHAPE

Vitreoretinal Instruments



9-2402

Scissors

9-1100
Straight scissors



9-1245 Angled
microscissors, 135°



9-1111 Vertical
Microscissors, 45°



9-1113 Vertical
Microscissors, 80°

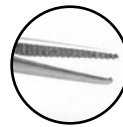


9-1200 Curved
Microscissors



Forceps

9-2105
Serrated jaw
forceps



9-2304
Foreign Body
Grasper



9-2107
Standard end
gripping forceps



9-2350
Sub-retinal angled
forceps



9-2300
Hockey stick
forceps



9-2353
Sub-retinal
vertical
microforceps



9-2302
Pic



Tip Covers

9-9000 Protective tip cover for vitreoretinal scissors and forceps

9-9001 Protective tip cover for ILM forceps

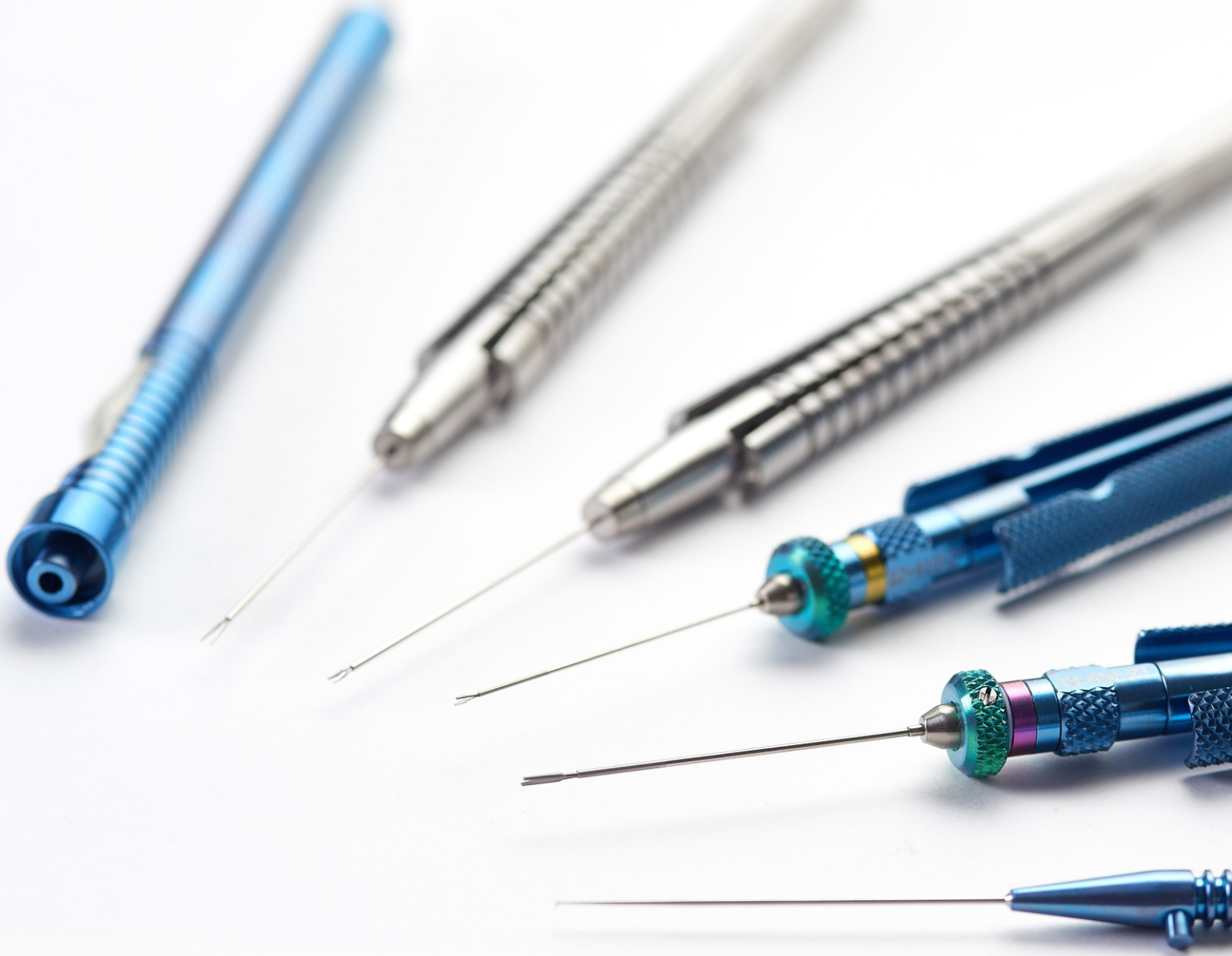
ILM Forceps

9-2400
Internal limiting
membrane
forceps,
straight tip



9-2402
Internal limiting
membrane
forceps, extra
fine tip





“Supporting Healthcare”

KAAHA INDUSTRIES

Manufacturer Of Dental & Surgical Instruments

☎ +92-300-717-1438

☎ +92-52-353-1555

☎ +92-52-353-1555

✉ sales@kaahaindustries.com

✉ info@kaahaindustries.com

🌐 www.kaahaindustries.com

📍 Head Marala Road, Kotli Loharan East, P.O.Box 51220 - Sialkot - Pakistan.

